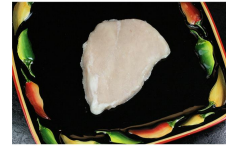




**Chicken, Ready to Cook Farm Pantry® Top Shelf™
Natural 4 oz. Fillet**



Chicken, All Natural ingredients 12% marinade 4 oz. Fillet 1 serving=1 fillet

Product Last Saved Date:31 May 2018

Nutrition Facts

40 Servings per container

Serving Size 4 oz

Amount Per Serving
Calories 110

% Daily Value*

Total Fat 2 g **3%**

Saturated Fat .5 g **2%**

Trans Fat 0 g

Cholesterol 85 mg **28%**

Sodium 150 mg **6%**

Total Carbohydrate 0 g **0%**

Dietary Fiber 0 g **0%**

Total Sugars 0 g

Includes g Added Sugars %

Protein 24 g

Vitamin D 0 mg 0%

Calcium 5 mg 0%

Iron .5 mg 2%

Potassium 400 mg %

*The % Daily Values (DV) tells you how much a nutrient in a serving of food contributes to a daily diet. 2,000 calories a day is used for general nutrition advice.

Product Specifications:

Man Prod Code	Dist Prod Code	GTIN	Pack	Pack Description
4314	682016	10038034431405	2 X 5 LBR	

Brand	Brand Owner	GPC Description
Brakebush®	Brakebush Brothers	Chicken - Unprepared/Unprocessed

Gross Weight	Net Weight	Country of Origin	Kosher	Child Nutrition
10.68 LBR	10 LBR	USA	Undeclared	No

Shipping Information

Length	Width	Height	Volume	TlxHI	Shelf Life	Storage Temp From/To
13.5 INH	8.63 INH	8.75 INH	0.59 FTQ	16x8	365 Days	-10 FAH / 0 FAH

Ingredients :

Boneless skinless chicken breast fillet containing up to 12% of a solution of water and sea salt.

Allergens(C='Contains' MC='May Contain' N='Free From' UN='Undeclared' 30='Free From Not Tested' 50='Derived From Ingredients' 60='Not Derived From Ingredients' NI='No Info

Eggs - N	Milk - N	Peanuts - N
Soy - N	Wheat - N	TreeNuts - N
Fish - N	Crustacean - N	

Handling Suggestions :

Keep frozen

Benefits :

4314-Uncooked Boneless Skinless 4 oz. Chicken Breast Fillets Natural:minimally processed, no artificial ingredients.

Serving Suggestions :

Ideal for sandwiches and center of the plate applications.

Prep & Cooking Suggestions :

Uncooked: for safety, must be cooked to an internal temperature of 165°F as measured by use of a thermometer.

More Information :